



**Maintenance | Documentation | Information | Budget Control**

# Improve your system for plant asset management!

# Idus Informa



## We keep our promises

For over ten years **Idus AB** has helped businesses improve maintenance procedures and contributed to greater profitability. Success has followed increasingly through the years and now **Idus IS** is one of the most widely used maintenance systems in Sweden.

Our successes are evidence of our lengthy practical experience in the maintenance industry. We continually develop the system in close collaboration with our innovative customers.

We know full well that a maintenance system installation can only be a success if everyone at the plant or company can use the program. Our philosophy has always been that it is the users, on the floor, who are to see the system as a natural tool in their daily undertakings.

Every customer who completes the basic training course is entitled to a one-year free support agreement that includes free technical support by telephone or e-mail, free upgrades of new versions plus attendance at user gatherings.

Several hundred satisfied customers are proof that we keep our promises.



## The Market's Most Powerful M

**Idus IS is a complete** information system that provides up-to-date information and documentation on technical installations in all plant sizes, from the small to the very large. The information provides the basis for maintenance analyses, cost control and fault cause identification. Improved planning increases production reliability, product quality and profitability.

**Idus IS is the market's most user-friendly** maintenance system and this applies to both infrequent users without computer skills and to advanced, frequent users. The point-and-click method is used for navigation in familiar images. **Idus IS** is flexible and can be adapted to EVERY type of industry.

**Idus IS increases plant accessibility** and provides rapid results since the implementation period is short. You get off to a quick start with the software by participating in a successful implementation project guaranteed by **Idus** and led by our project leaders with maintenance experience.

# ation System



## Maintenance System!

### All functions are included

#### Plant Structure

The system's heart is the plant tree that is structured according to the company's structure. Objects and navigation images are linked to its branches.

#### Object Cards

You are free to design the layout of the cards so that they contain the component information that you require. External documents such as manuals, drawings, schematics etc are also linked to these objects.

#### Fault Reports

Fault reports can be registered directly from the image in the software or via a handheld computer. Automatic printing of fault reports to your choice of printers or transmission by e-mail is available as an option. Fault statistics provide information for analyses and can generate work orders.

#### Maintenance Functions

These manage corrective, preventive and condition-based maintenance. The planning function can automatically generate work orders based on calendar time, events plus other values such as operating hours.

#### Rounds List

There is a special rounds list which satisfies the need for simplicity in frequent undertakings, e.g. lubrication and inspections.

#### Stock

This contains up-to-date item data including information on suppliers, stock balance, location, price, order point as well as the objects in the plant that the item belongs to. Handheld stock-keeping computers with barcode readers to handle withdrawal and inventory are available as options.

#### Purchasing

Manages, for example, direct purchases or call-offs, receiving and invoice control.

#### Time Reporting

Expended time and cost per employee can be registered per work order or overall.

#### Reports and History

All the information in the database can be viewed on-screen and printed. New reports are created in Crystal Report or Excel, directly from the database. The historical data can be used to discover the cause of concealed faults.

#### Downtime Registration

Production follow-up with stop and start times as well as source codes for production equipment. Direct access via a mouse click in an image or through a link to a monitoring system.

#### Security Settings

Each function can be reserved for specific users to increase security.

#### Accounting

All transaction types in the system can be followed up from a financial perspective using a large number of parameters. Automatic information exchange allows accounts, cost centre, cost unit etc to communicate with a variety of accounting systems.

#### Graphic Interface

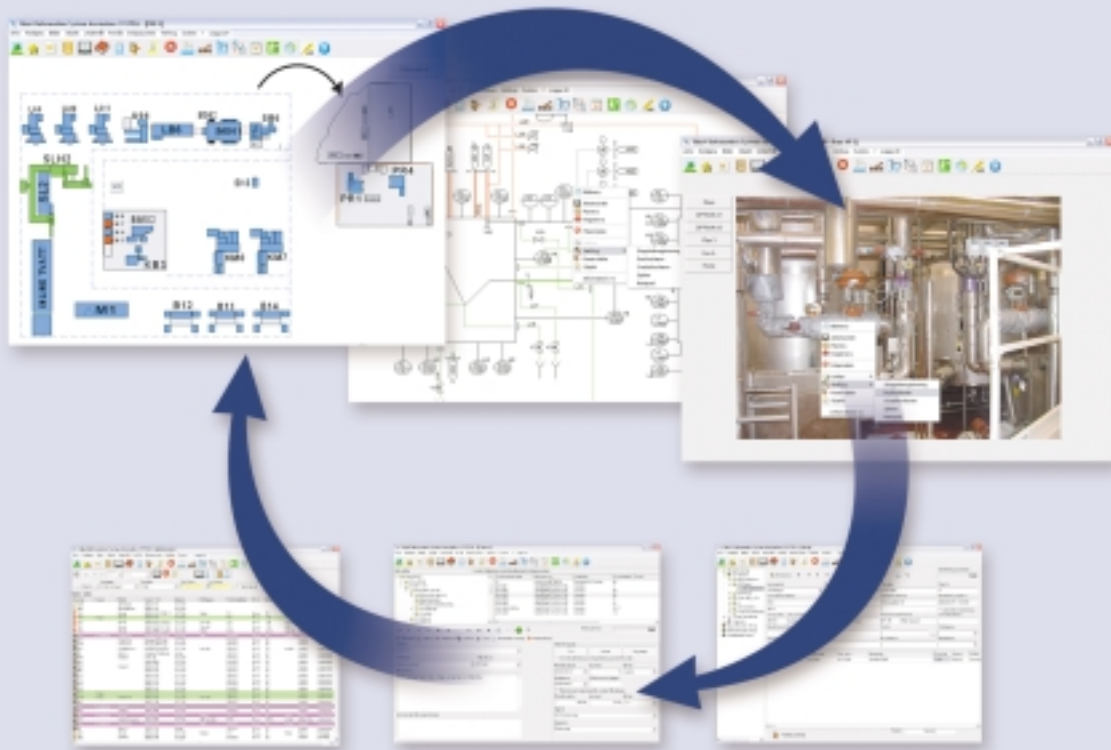
Using the OPL link tool you create image links as buttons or areas very simply and easily.



### Idus IS is the centre of the company's IT structure

Idus IS is a team player that cooperates with your company's other systems to ensure an optimal information flow.

# ”Point & Click” logical and easy



**Idus IS** uses the ”Point & Click” method to allow the user to zoom in on a feature of the plant in order to reach information and functions directly from the image’s linked areas. An image can be based on all types of information, e.g. CAD, photos or a simple overview. –**Take your pick!**

## Many more fields of application

**Idus Information System's** flexibility means it can also be used for environment and quality assurance as well as for risk analyses and continuous monitoring. Flexibility in combination with handheld computers and barcode-based administration makes the system very powerful.

## Technical Information

**Idus Information System** is a Swedish, PC-based program adaptable from single user to unlimited client/server solutions. The program can be delivered in more than ten languages and is available for InterBase SQL, MS SQL and Oracle databases.

